

Teacher/Staff Re-Entry Survey July 2020

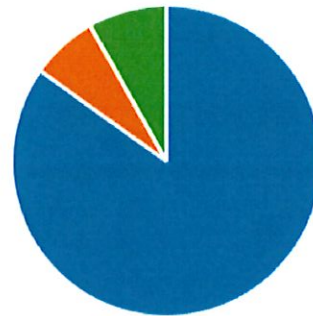
86
Responses

06:11
Average time to complete

Closed
Status

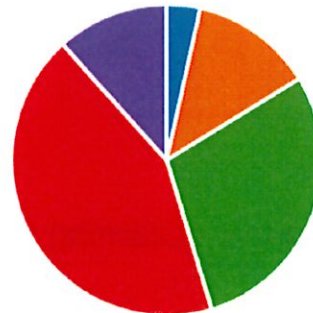
1. Please choose your role:

- Teacher 73
- Support staff who works direc... 6
- Other staff in the building 7



2. What percentage of your students completed assignments each week?

- 0%-25% 3
- 26%-50% 11
- 51%-74% 25
- 75%-100% 37
- Question does not apply to m... 10



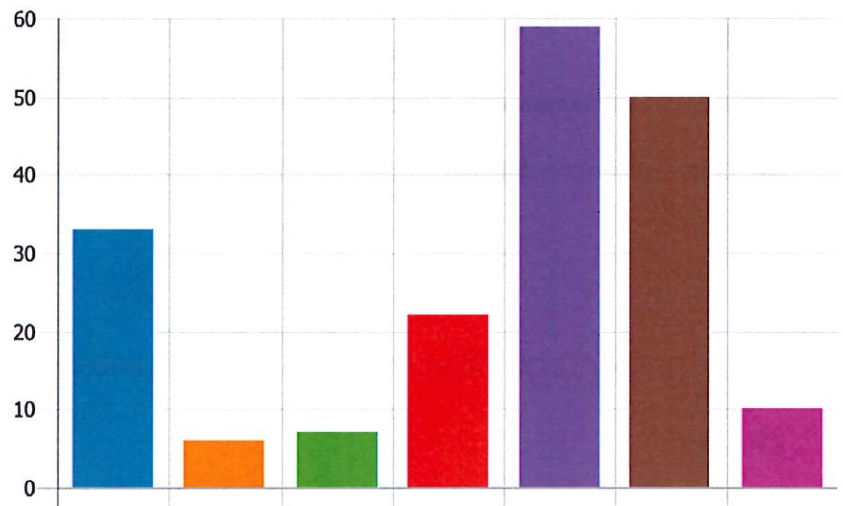
3. What percentage of of your students checked in with you each week? (email, zoom, message)

● 0%-25%	8
● 26%-50%	17
● 51%-74%	21
● 75%-100%	32
● Question does not apply to m...	8



4. What were the most effective ways you used to communicate with your families during the school buildings closures? Please check all that apply.

● Personal phone calls from you	33
● SwiftK12 calls	6
● SwiftK12 texts	7
● SwiftK12 emails	22
● Class Pages/Unified Classroom	59
● "Other" class programs such a...	50
● Social Media	10



5. In order to improve eLearning for the future, what are your suggestions?

64
Responses

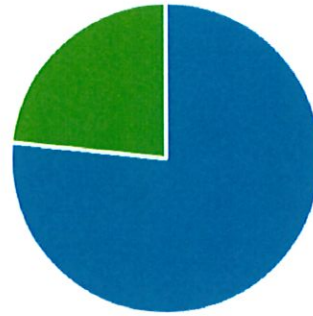
Latest Responses

"Creating a schedule would help. Making sure that the students ...

"The PAP program students had their own school issued ipad so ...

6. When school re-opens, do you intend to return to your building (or new building)?

● Yes	66
● No	0
● Unsure	20



7. What are the main areas of professional development that should be offered? Please check as many as necessary.

● COVID related education	53
● Effective Blended Learning or ...	51
● Project Based Learning	39
● Social Emotional Learning	39
● Scoology	66
● The administration of assessm...	31
● Option	4

